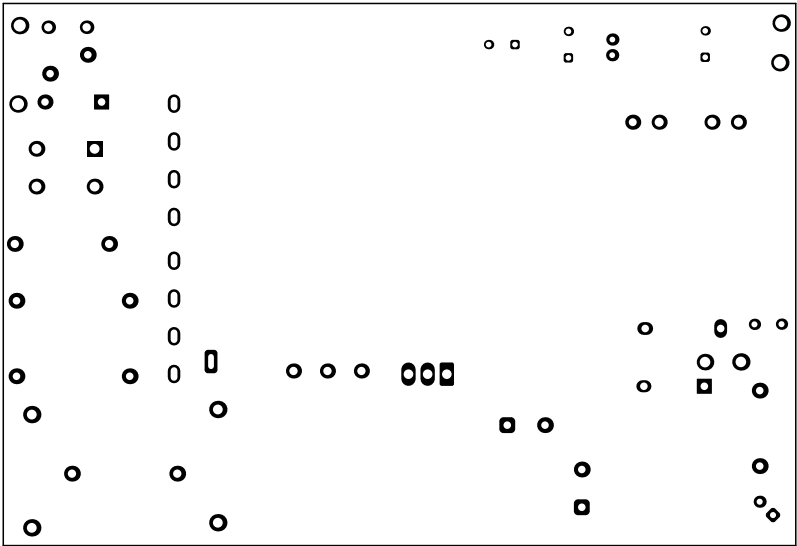


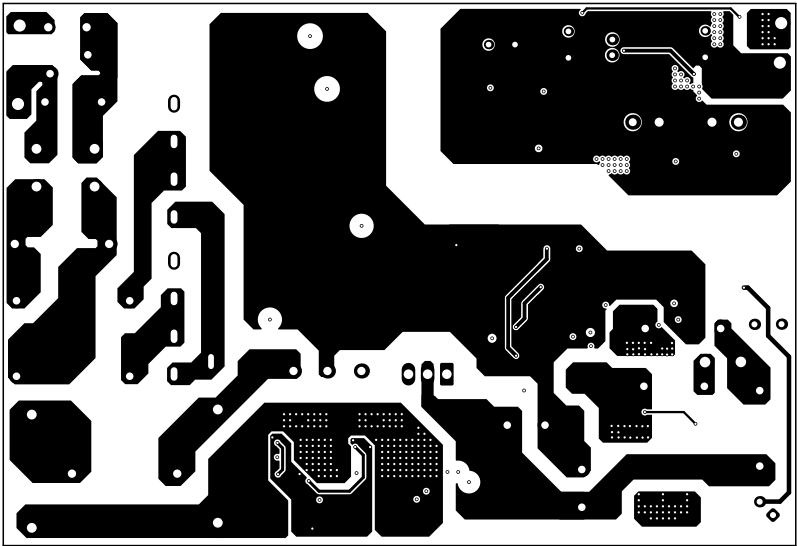
ALL ARTWORK VIEWED FROM TOP SIDE	BOARD #: PMP23558	REV: C	SUN REV: Not in version control
LAYER NAME = Top Overlay	TID #: N/A		
PLOT NAME = Top Overlay	GENERATED : 3/15/2025 8:33:49 AM		TEXAS INSTRUMENTS





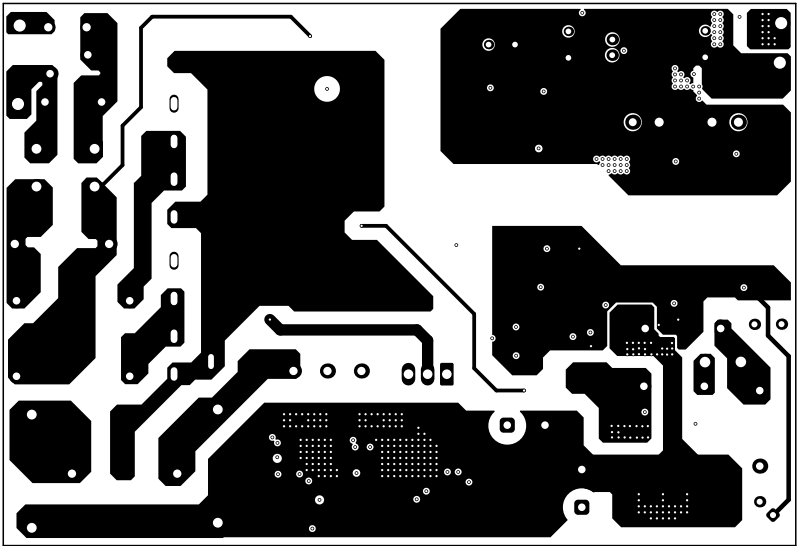
ALL ARTWORK VIEWED FROM TOP SIDE	BOARD #: PMP23558	REV: C	SUN REV: Not in version control
LAYER NAME = Top Solder	TID #: N/A		
PLOT NAME = Top Solder Mask	GENERATED : 3/15/2025 8:33:49 AM		TEXAS INSTRUMENTS





ALL ARTWORK VIEWED FROM TOP SIDE	BOARD #: PMP23558	REV: C	SUN REV: Not in version control
LAYER NAME = Top Layer	TID #: N/A		
PLOT NAME = Top Layer	GENERATED : 3/15/2025 8:33:49 AM	TEXAS INSTRUMENTS	

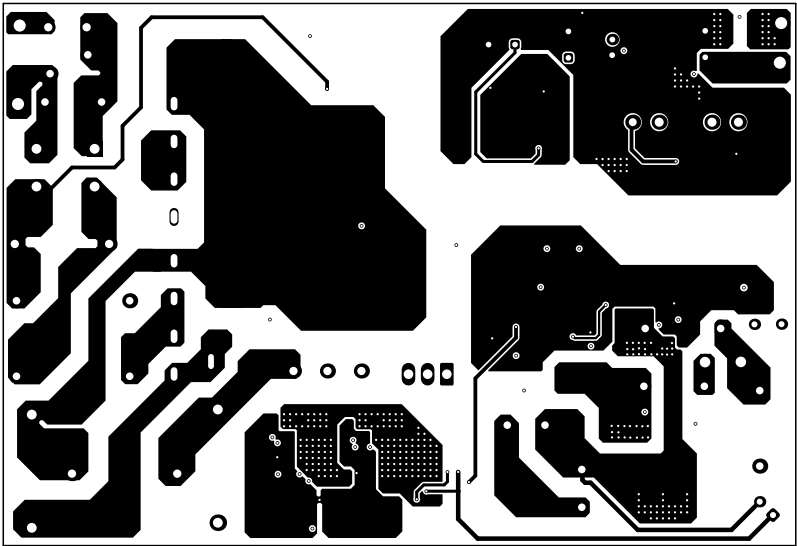




ALL ARTWORK VIEWED FROM TOP SIDE	BOARD #: PMP23558	REV: C	SUN REV: Not in version control
LAYER NAME =	TID #: N/A		
PLOT NAME = Signal Layer 1	GENERATED : 3/15/2025 8:33:49 AM	TEXAS INSTRUMENTS	

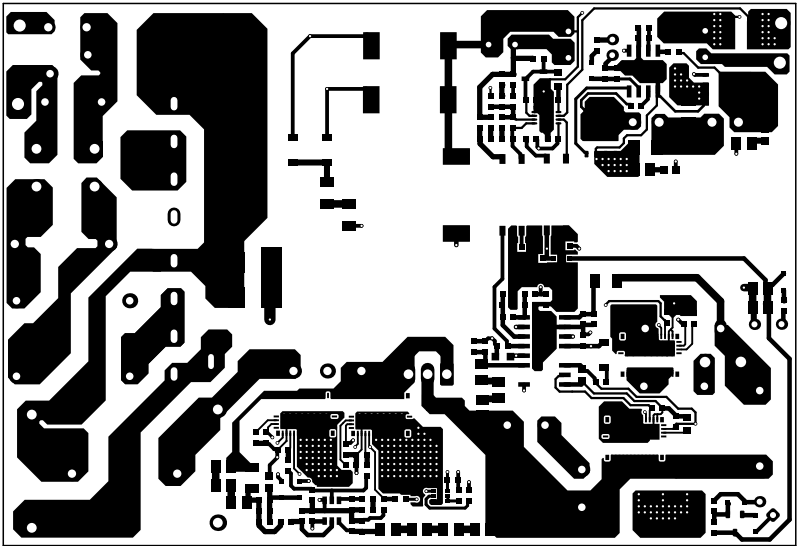






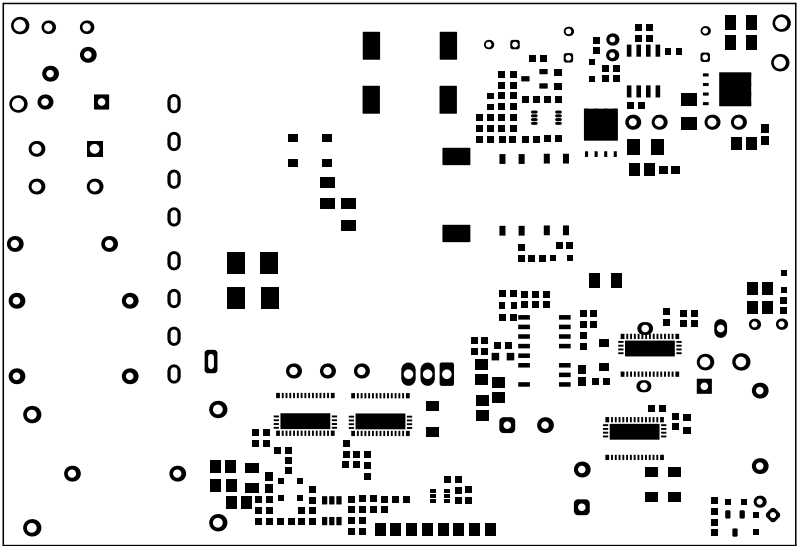
ALL ARTWORK VIEWED FROM TOP SIDE	BOARD #: PMP23558	REV: C	SUN REV: Not in version control
LAYER NAME =	TID #: N/A		
PLOT NAME = Signal Layer 2	GENERATED : 3/15/2025 8:33:49 AM	TEXAS INSTRUMENTS	





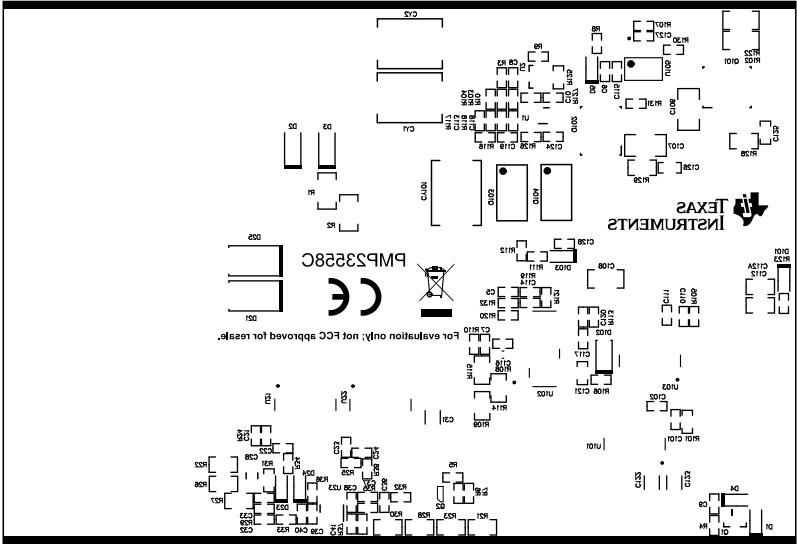
ALL ARTWORK VIEWED FROM TOP SIDE	BOARD #: PMP23558	REV: C	SUN REV: Not in version control
LAYER NAME = Bottom Layer	TID #: N/A		
PLOT NAME = Bottom Layer	GENERATED : 3/15/2025 8:33:49 AM	TEXAS INSTRUMENTS	





ALL ARTWORK VIEWED FROM TOP SIDE	BOARD #: PMP23558	REV: C	SUN REV: Not in version control
LAYER NAME = Bottom Solder	TID #: N/A		
PLOT NAME = Bottom Solder Mask	GENERATED : 3/15/2025 8:33:50 AM	TEXAS INSTRUMENTS	



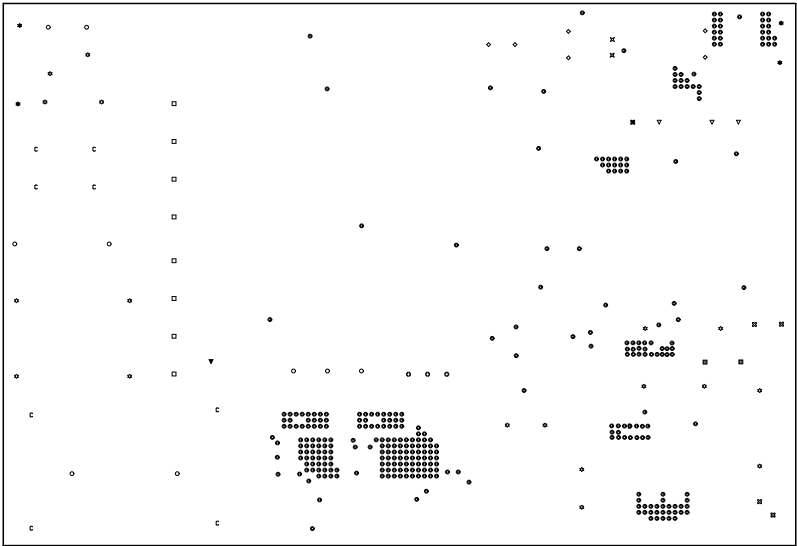


ALL ARTWORK VIEWED FROM TOP SIDE	BOARD #: PMP23558	REV: C	SUN REV: Not in version control
LAYER NAME = Bottom Overlay	TID #: N/A		
PLOT NAME = Bottom Overlay	GENERATED : 3/15/2025 8:33:50 AM	TEXAS INSTRUMENTS	



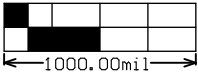
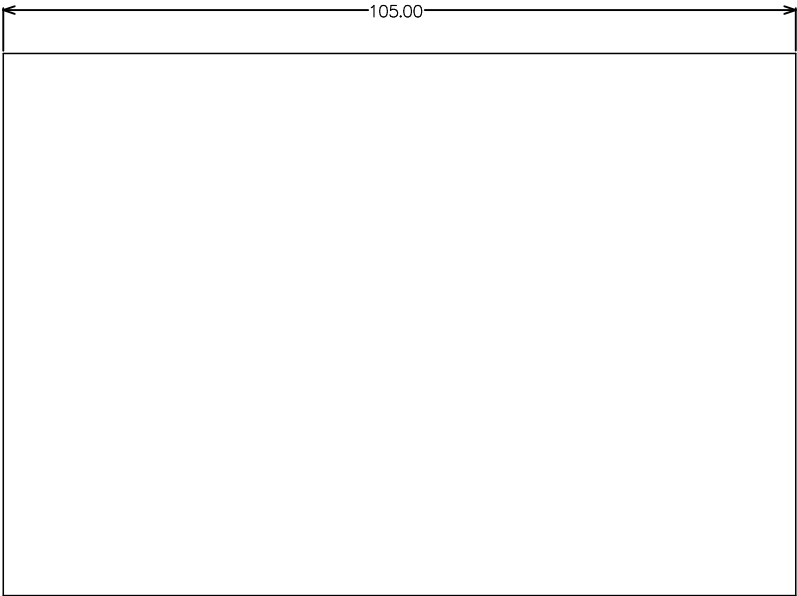
Symbol	Quantity	Finished Hole Size	Plated	Hole Type	Drill Layer Pair	Hole Tolerance
D	1	7.87mil (0.200mm)	PTH	Round	Top Layer - Bottom Layer	
⬤	325	11.81mil (0.300mm)	PTH	Round	Top Layer - Bottom Layer	
◇	6	29.53mil (0.750mm)	PTH	Round	Top Layer - Bottom Layer	
⊠	2	30.00mil (0.762mm)	PTH	Round	Top Layer - Bottom Layer	
⊠	4	31.50mil (0.800mm)	PTH	Round	Top Layer - Bottom Layer	
⋄	18	39.37mil (1.000mm)	PTH	Round	Top Layer - Bottom Layer	
⊠	1	41.34mil (1.050mm)	PTH	Round	Top Layer - Bottom Layer	
○	9	43.31mil (1.100mm)	PTH	Round	Top Layer - Bottom Layer	
▽	3	47.24mil (1.200mm)	PTH	Round	Top Layer - Bottom Layer	
⊕	3	50.00mil (1.270mm)	PTH	Round	Top Layer - Bottom Layer	
C	8	51.18mil (1.300mm)	PTH	Round	Top Layer - Bottom Layer	
▣	2	55.12mil (1.400mm)	PTH	Round	Top Layer - Bottom Layer	
⋄	4	63.00mil (1.600mm)	PTH	Round	Top Layer - Bottom Layer	
▽	1	30.00mil (0.762mm)	PTH	Slot	Top Layer - Bottom Layer	
□	8	35.43mil (0.900mm)	PTH	Slot	Top Layer - Bottom Layer	
395 Total						

Slot definitions : Routed Path Length = Calculated from tool start centre position to tool end centre position.  
Hole Length = Routed Path Length + Tool Size + Slot length as defined in the PCB layout



ALL ARTWORK VIEWED FROM TOP SIDE	BOARD #: PMP23558	REV: C	SUN REV: Not in version control
LAYER NAME = Drill Drawing	TID #: N/A		
PLOT NAME = Drill Drawing	GENERATED : 3/15/2025 8:33:50 AM		TEXAS INSTRUMENTS





ALL ARTWORK VIEWED FROM TOP SIDE	BOARD #: PMP23558	REV: C	SUN REV: Not in version control
LAYER NAME = M2 Board Dimensions	TID #: N/A		
PLOT NAME = Board Dimensions	GENERATED : 3/15/2025 8:33:50 AM		TEXAS INSTRUMENTS